



etherDVB

Quick Start Guide

Congratulations on choosing EtherDVB as your DVB/IP gateway. This guide explains how to quickly configure a DVB-T equipped unit. To configure a DVB-S unit, please consult the EtherDVB Operation Manual on the supplied CD-ROM.



Front View



Rear View

Equipment Setup

1. Attach an appropriate antenna to each card
2. Connect the first (leftmost) ethernet port to a DHCP enabled network
3. Connect power cable
4. Turn it on
5. View the front panel to see the IP address it received
6. Go to the IP address in your web browser
7. Log in with username **admin** password **admin**

etherDVB

- Status
- Streams Active
- System Information**
- Devices
- Device Summary
- dvb://1
- Bottom Slot Empty
- Programs
- Program Listing
- Administration
- Server Settings
- Defaults
- File Management
- Web Server
- System Log
- SAP Server
- Accounts
- Network
- Logout <admin>
- About
- Streamer
- EtherDVB

Media Streamer System Status	
Version:	1.9.90 [Generated Sat May 17 17:10:57 EST 2008]
Current Time:	Sun, 18 May 2008 11:40:25 +1000
System Started:	Sat, 17 May 2008 17:09:34 +1000
Streamer Started:	Sun, 18 May 2008 06:09:36 +1000
Load:	2848 / 1984 / 96
Memory:	253894 KB Total, 4091 KB Free, 0 KB Shared
Streams Enabled:	Multicast transmission enabled
dvb://1	ABC (Lock) 22.367 Mbps
eth0	TX: 0.000 Mbps RX: 0.000 Mbps
eth1	TX: 0.000 Mbps RX: 0.000 Mbps
eth2	TX: 0.000 Mbps RX: 0.000 Mbps
eth3	TX: 0.000 Mbps RX: 0.000 Mbps
NTP:	No NTP server defined


Logged in as administration user

Scan for Networks

An EtherDVB can find all the channels using the tuner you specify. Choose a **dvb://** device to begin the configuration.

Device Summary					
Device	Slot	Provider	Status	Type	Bitrate
encoder://1	Top	Live Encoding	Active	MPEG2 Encoder	7.553 Mb/s
dvb://0	Bottom	ABC	Lock	DVB Terrestrial	22.375 Mb/s

The **Bouquet Presets** tab for the device lists all the networks that can be tuned. To find all the networks in your area, click the **Scan** button.



Status

- Streams Active
- Save Configuration Required
- System Information

Devices

- Device Summary
- [dvb://1](#)
- Bottom Slot Empty

Programs

- Program Listing

Administration

- Server Settings
- Defaults
- File Management
- Web Server
- System Log
- SAP Server
- Accounts
- Network
- Logout <admin>

About

- Streamer
- EtherDVB

dvb://1 - DVB Terrestrial

Network Name: SBS NETWORK		Bitrate: 17.419 Mb/s	
BER: 0	Strength: 87 %	SNR: 80 db	

[Basic Settings](#)
[Bouquet Presets](#)

- discovered broadcasts will be retained

Trying channel 30 (543.375 MHz) (30% complete in 90 seconds)

Channel	Provider	Frequency	Strength	SNR	Action
6	Southern Cross Television	177.500 MHz	92 %	84 %	-
9A	ABC	205.625 MHz	93 %	89 %	-
11	WIN Digital	219.500 MHz	92 %	90 %	-
12	PRIME	226.500 MHz	93 %	80 %	-

- A **scan** will interrupt any streams currently from this tuner
- Saving** will overwrite any existing stored channel data
- The saved provider name is only displayed in the **presets** area.
- Presets are available across the all DVB adapters of the same type

Scanning with a DVB-T tuner takes around 4 minutes. The page is updated during the procedure.

Tune to a Network

When the scan is complete, you can choose which broadcaster's network will be used by the chosen device. Click a **Tune** button to tune your device to the desired network.

etherDVB

Status
Streams Active
Save Configuration Required
System Information

Devices
Device Summary
dvb://1
Bottom Slot Empty

Programs
Program Listing

Administration
Server Settings
Defaults
File Management
Web Server
System Log
SAP Server
Accounts
Network
Logout <admin>

About
Streamer
EtherDVB

dvb://1 - DVB Terrestrial

Network Name: ABC **Bitrate:** 22.423 Mb/s
BER: 0 **Strength:** 93 % **SNR:** 88 db

[Basic Settings](#) [Bouquet Presets](#)

Full scan completed in 283 seconds - Press [Rescan](#) to scan again

Channel	Provider	Frequency	Strength	SNR	Action
9A	ABC	205.666 MHz	93 %	88 %	Save
6	Southern Cross Television	177.500 MHz	92 %	84 %	Delete Tune
9A	ABC	205.625 MHz	93 %	89 %	Delete Tune
11	WIN Digital	219.500 MHz	92 %	90 %	Delete Tune
12	PRIME	226.500 MHz	93 %	80 %	Delete Tune
30	SBS NETWORK	543.500 MHz	88 %	80 %	Delete Tune

- A **scan** will interrupt any streams currently from this tuner
- Saving** will overwrite any existing stored channel data
- The saved provider name is only displayed in the **presets** area.
- Presets are available across the all DVB adapters of the same type

Tuning in to the network will present the individual television programs being broadcast. These channels, or programs, can now be sent to your multicast network. Choose one of the **dvb://** Programs to continue the configuration.

etherDVB

Status
Streams Active
Save Configuration Required
System Information

Devices
Device Summary
dvb://1
Bottom Slot Empty

Programs
Program Listing

Administration
Server Settings
Defaults
File Management
Web Server
System Log
SAP Server
Accounts
Network
Logout <admin>

About
Streamer
EtherDVB

dvb://1 - DVB Terrestrial

Network Name: ABC **Bitrate:** 22.370 Mb/s
BER: 0 **Strength:** 92 % **SNR:** 88 db

[Basic Settings](#) [Bouquet Presets](#)

Frequency: 205.666 MHz **Inversion:** on **Bandwidth:** 7

QAM: 64 **Code rate HP:** 3/4 **Code rate LP:** 1/2

Transmission mode: 8k **Guard Interval:** 1/16 **Heirarchy:** none

[Update Tuner Settings](#)

Program	Name	Access	State	Bitrate	Streams
dvb://1/528	ABC HDTV	Open	Idle	10.393 Mb/s	
dvb://1/529	ABC1	Open	Idle	6.398 Mb/s	
dvb://1/530	ABC2	Open	Idle	4.959 Mb/s	
dvb://1/531	ABC1	Open	Idle	5.978 Mb/s	
dvb://1/532	ABC3	Open	Idle	5.900 Mb/s	
dvb://1/534	ABC DiG Radio	Open	Idle	0.268 Mb/s	
dvb://1/535	ABC DiG Jazz	Open	Idle	0.268 Mb/s	

Configure Destination Address

To configure a multicast TV channel on your network you need to specify the multicast IP address, or **Group**. A good testing group is 239.255.1.1 but you can use any class D network address between 224.0.0.0 and 239.255.255.255.

dvb://1 - DVB Terrestrial

Program ID: [dvb://1/528](#) Program Number: 528
 Name: ABC HDTV Access: Free
 State: Idle Created: 18/May/2008 11:57:49 +1000
 Bitrate: 10.415 Mb/s PIDS: PMT 258 / PCR 2309

PID	Type	Description	PPS	Bitrate
2314	Video	1280x720 pixels, 50 Hz, 16x9 ratio	6536	9.830 Mb/s
2315	Audio	Dolby Digital (1/0) (English)	307	0.462 Mb/s
2316	Teletext	English	50	0.075 Mb/s

Group	Port	TTL	TOS	SAP	Interface	Action
239.255.1.1	1234	4	0	ABC HDTV	eth0	Create

Program Name: Record

The **SAP** field is the channel name that is displayed in your users' TV viewer. Click **Create** to complete the configuration and begin streaming the channel. Follow this procedure to begin streaming any or all of the programs being received by this device.

The **Device Summary** and **Program Listing** pages show the channels now streaming.

dvb://1 - DVB Terrestrial

Network Name: ABC Bitrate: 22.425 Mb/s
 BER: 0 Strength: 93 % SNR: 89 db

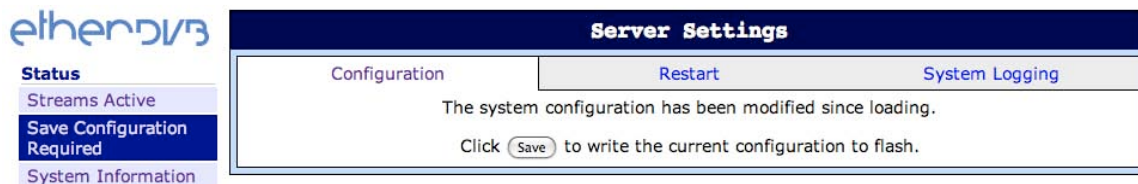
Basic Settings: Frequency: 205.666 MHz Inversion: on Bandwidth: 7
 QAM: 64 Code rate HP: 3/4 Code rate LP: 1/2
 Transmission mode: 8k Guard Interval: 1/16 Heirarchy: none

Update Tuner Settings

Program	Name	Access	State	Bitrate	Streams
dvb://1/528	ABC HDTV	Open	Streaming	10.415 Mb/s	x 1
dvb://1/529	ABC1	Open	Streaming	6.410 Mb/s	x 1
dvb://1/530	ABC2	Open	Streaming	4.968 Mb/s	x 1
dvb://1/531	ABC1	Open	Idle	5.990 Mb/s	
dvb://1/532	ABC3	Open	Idle	5.912 Mb/s	
dvb://1/534	ABC DIG Radio	Open	Streaming	0.271 Mb/s	x 1
dvb://1/535	ABC DIG Jazz	Open	Streaming	0.271 Mb/s	x 1

Save Configuration

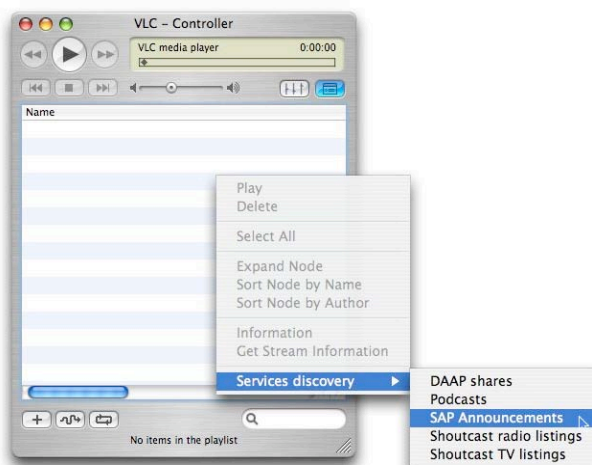
After configuring your EtherDVB you should save the configuration. The tuner and streaming settings are then recalled when the unit is rebooted or powered up.



Quick Test

To test that your channels are working, download the VLC program from <http://www.videolan.org/>.

- Connect your testing PC to the destination network.
- Launch VLC
- Right-click in the playlist window to enable SAP Announcements



After a few moments, your channels should appear in VLC's playlist. Just double-click a channel to show it.

